



Findings from the Central State Hospital Tracking Project: A Ten Year Retrospective

Eric R. Wright, Ph.D.

Director, IU Center for Health Policy

Associate Director, Indiana Consortium for Mental Health Services Research

*Professor and Division Director, Health Policy and Management, Department of Public Health
IU School of Medicine*

ewright@iupui.edu

(317) 274-3161

Indiana Consortium for Mental Health Services Research



The Tracking Project Team

- John H. McGrew, Ph.D.
- Bernice A. Pescosolido, Ph.D.
- Eric R. Wright, Ph.D.
- Terry White, MBA
- Susan Jaeger, MPH
- Anthony Lawson, BS
- Harold Kooreman, MA

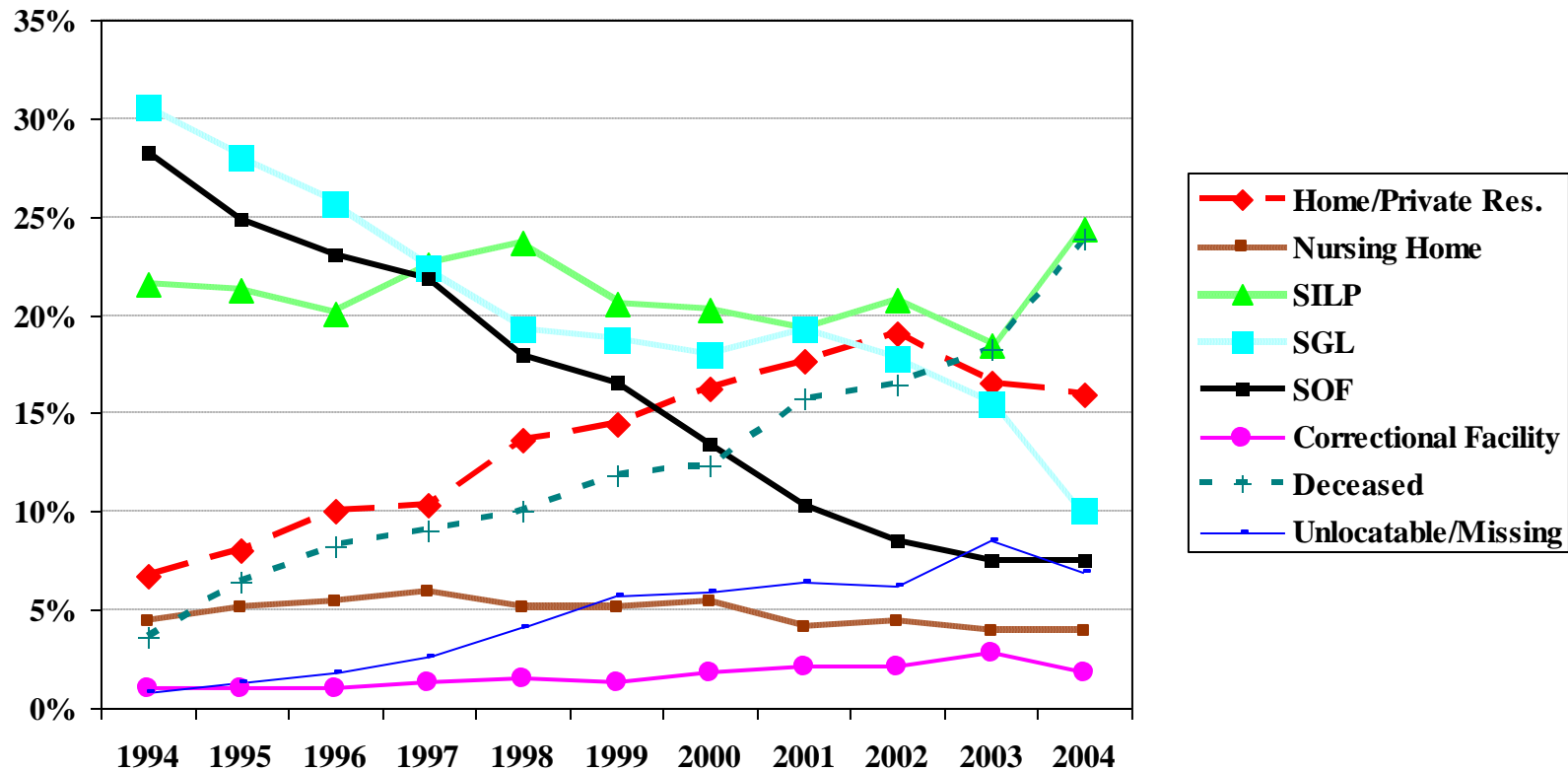


The Tracking Form

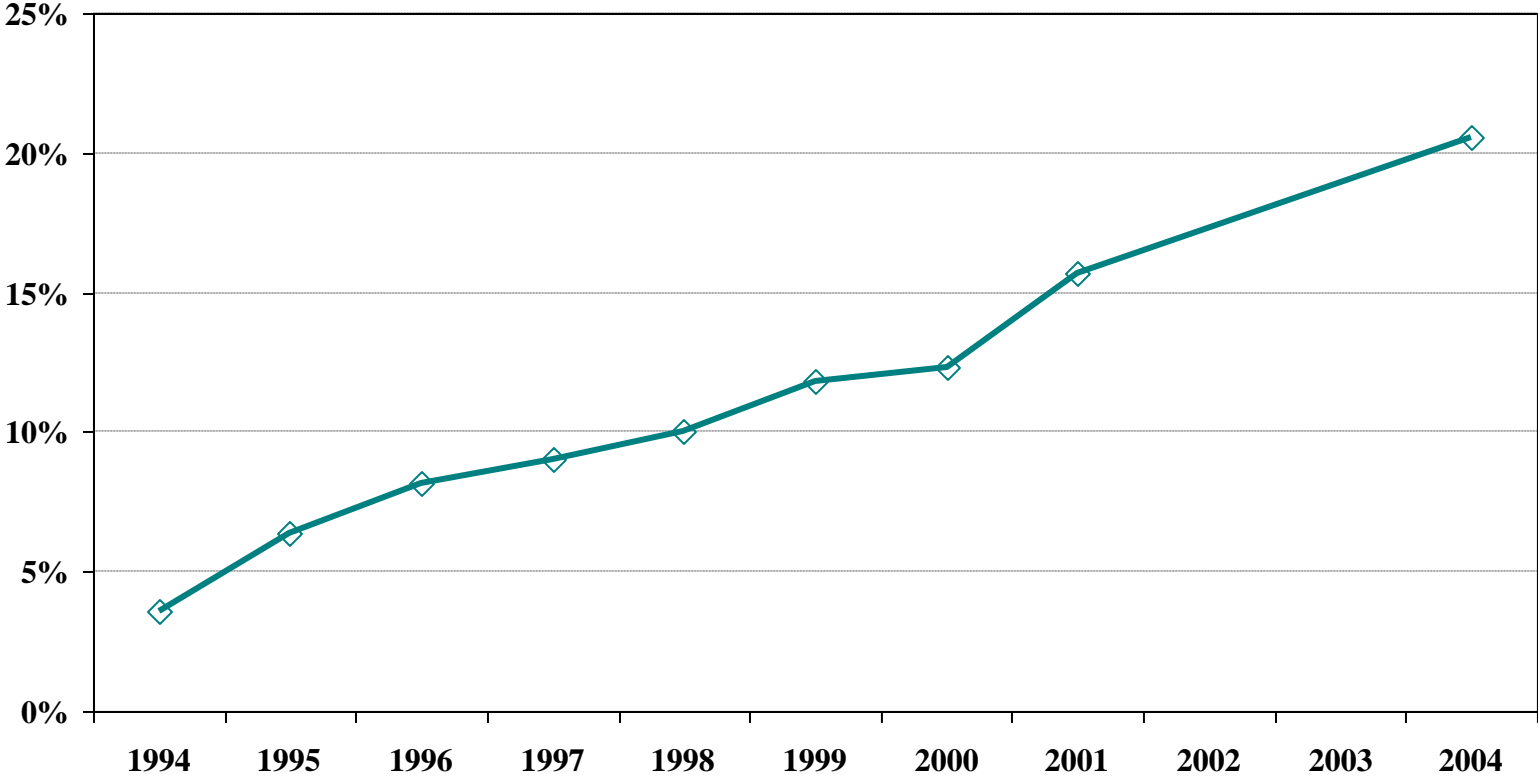
- DMHA Required Data
 - Location (Facility and City State)
 - Service Status
- ICMHSR Suggested Supplemental Data
 - Clinical Functioning
 - Acute Care Hospitalizations
 - Health Status (i.e., physical health problems)
 - Contacts with Law Enforcement
- Three Major Substantive Revisions of the Tracking Form



Former CSH Clients' Main Residential Placements, July, 1994 to July, 2004



Mortality Trend in the Former CSH Client Cohort (July 1994 to December, 2004)



Major Causes of Death of Former CSH Clients Through December 2002 (N=80)

	N	%	N	%
ACCIDENTS			3	3.8%
AIDS RELATED COMPLICATIONS			1	1.3%
ASPIRATION			2	2.5%
CANCER			9	11.3%
DIABETES RELATED COMPLICATIONS			1	1.3%
EXPOSURE (homeless)			1	1.3%
EXSANGUINATION (ruptured blood vessel)			1	1.3%
HEART CONDITIONS			11	13.8%
LUNG CONDITIONS			6	7.5%
“NATURAL CAUSES”			8	9.7%
ORGAN FAILURE			2	2.5%
RUPTURED ESOPHAGUS			1	1.3%
SEIZURE DISORDER			4	5.0%
SPONTANEOUS INTRA-CRANIAL HEMORRHAGE			1	1.3%
SUDDEN DEATH SYNDROME			1	1.3%
UNKNOWN			28	35.0%
TOTAL			80	100.0%



Leading Causes of Death

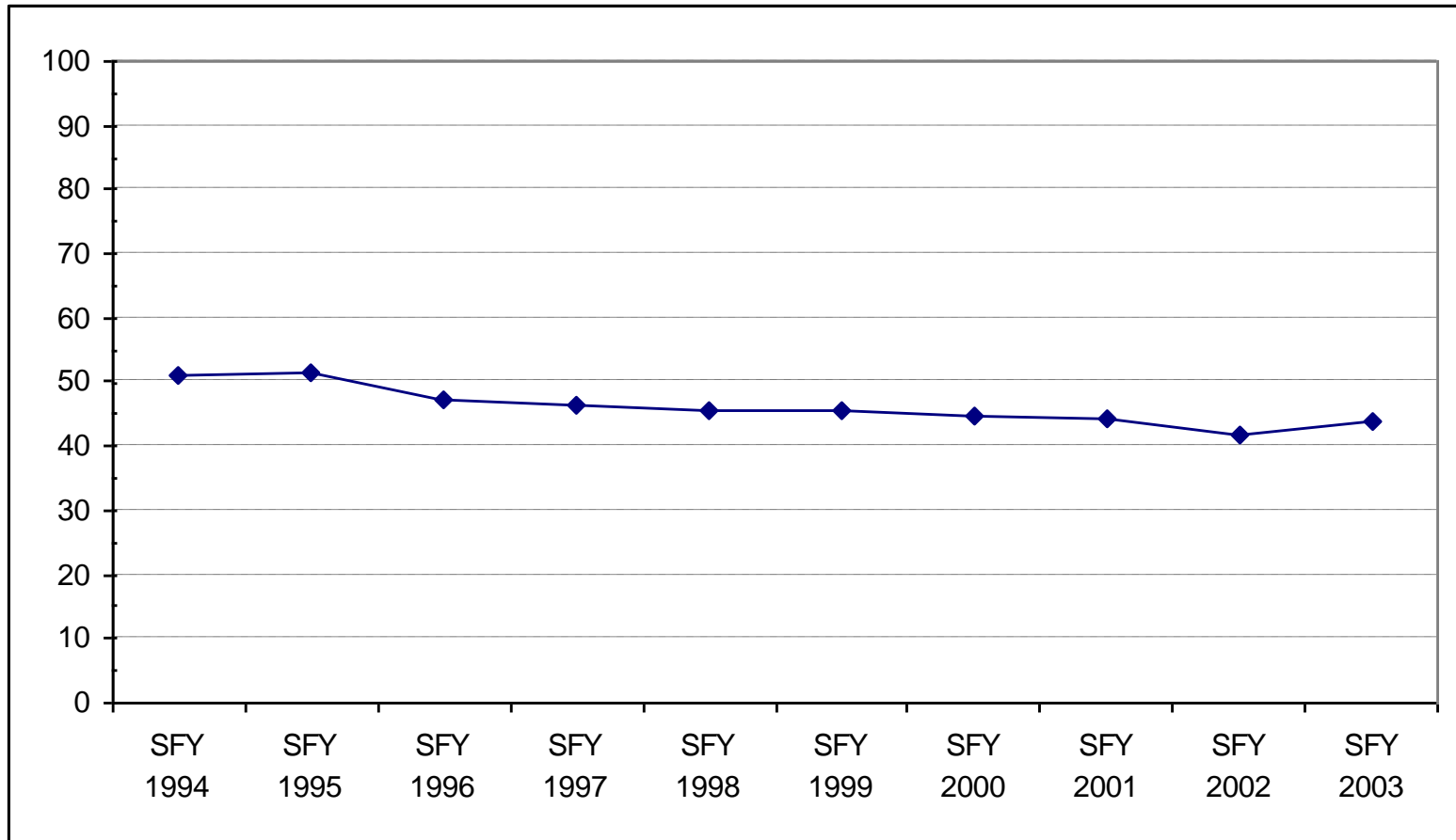
By Sex, Indiana and CSH Cohort (through 2002)

	General Population		CSH Cohort	
	N = 55,123	Overall Rate	N = 80	Overall Rate
1. Heart Disease	M = 7,353 F = 7,826	13.3% 14.2%	M = 9 F = 2	11.3% 2.5%
2. Cancer	M = 6,531 F = 6,240	11.9% 11.3%	M = 5 F = 4	6.3% 5.0%
3. Stroke	M = 1,336 F = 2,338	2.4% 4.2%	M = 0 F = 0	0.0% 0.0%
4. Chronic Lower Respiratory Disease	M = 1,569 F = 1,558	2.8% 2.9%	M = 3 F = 3	3.8% 3.8%
5. Accidents	M = 1,270 F = 816	2.3% 1.5%	M = 3 F = 0	3.8% 0.0%

M = Male, F = Female



Mean GAF Score of Former CSH Clients From July 1, 1994 through June 30, 2004

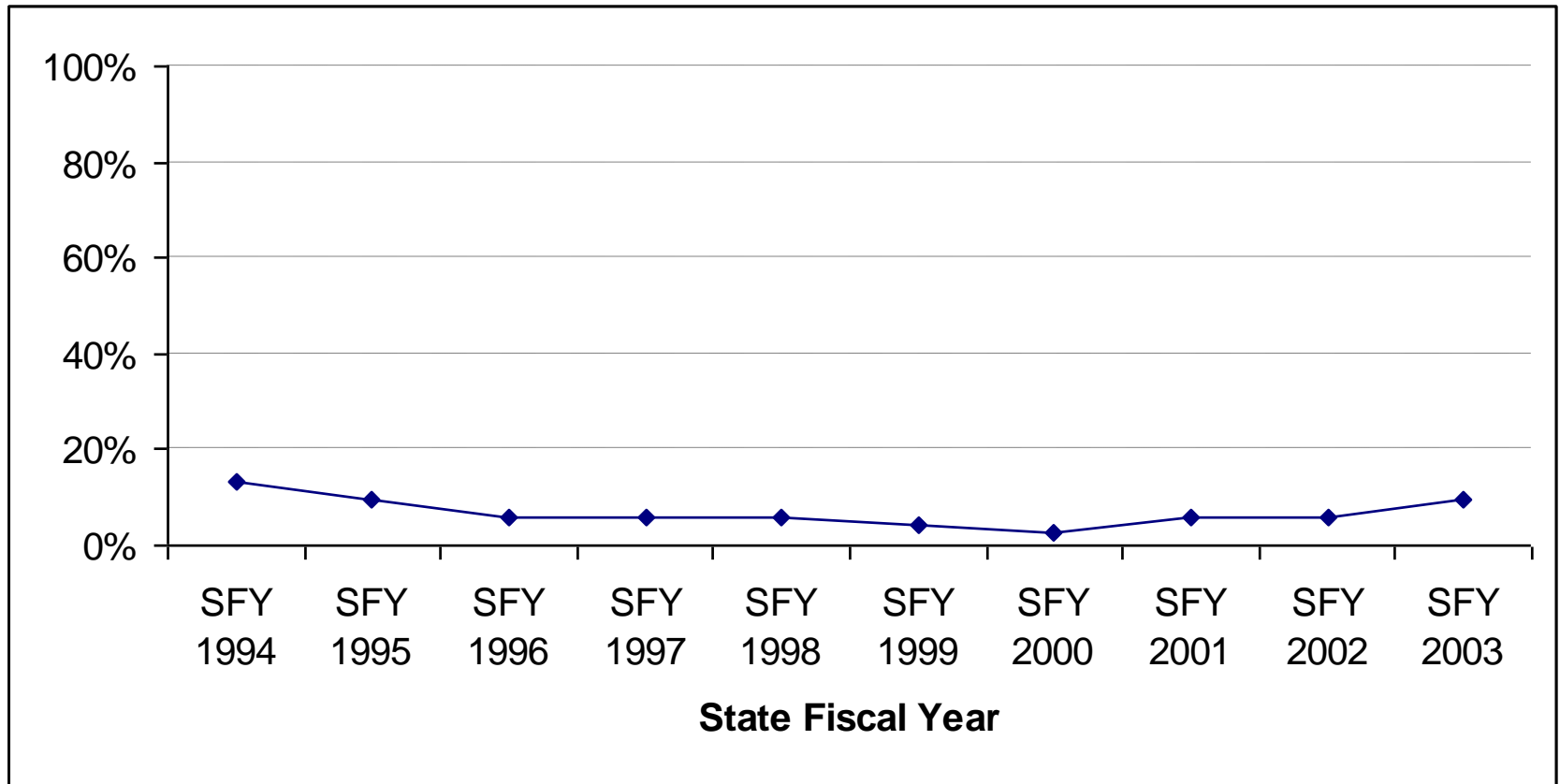


Overall Mean: 46.47 (SD=13.89)

Indiana Consortium for Mental Health Services Research



Percent of Living Cohort Admitted to Acute Care From July 1, 1994 through June 30, 2004

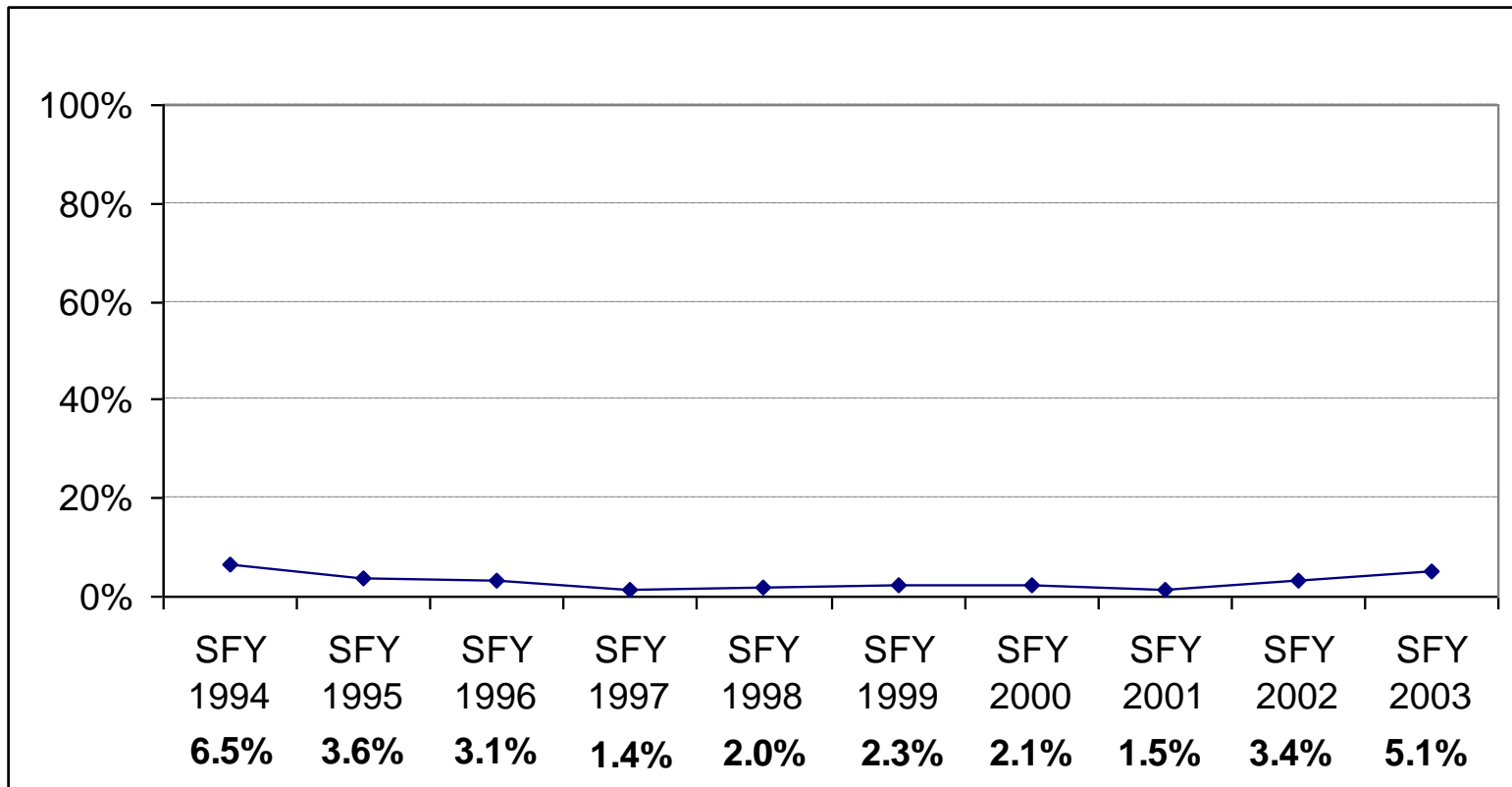


Acute Care Hospitalization Admissions From July 1, 1994 through June 30, 2004

Year	Total Acute Care Admissions	Number of Clients Admitted	Average Stay per Admission
SFY 1994	96	49	13.62
SFY 1995	57	34	10.12
SFY 1996	39	21	11.47
SFY 1997	36	20	15.95
SFY 1998	35	20	6.55
SFY 1999	30	15	9.45
SFY 2000	30	9	13.92
SFY 2001	37	19	11.18
SFY 2002	39	19	6.03
SFY 2003	50	29	10.72
	M=44.9 SD=19.8	M=23.5 SD=11.7	M=11.31 SD=10.93



Former CSH Clients' Police Contact Trends From July 1, 1994 through June 30, 2004



Police Contacts of the Former CSH Clients July 1, 1994 through June 30, 2004

NON-VIOLENT CONTACTS	N	%
Missing	24	12.4
Public Intoxication	23	11.9
Probation Violation	19	9.8
Missing Persons Report	17	8.8
Other	12	6.2
Detained	11	5.7
Hospital Escort	9	4.7
Police called to respond	8	4.1
Apprehension and Return	6	3.1
Emergency Detention	6	3.1
Immediate Detention	6	3.1
Trespassing	6	3.1
Possible Illegal Substance	5	2.6
Theft	5	2.6
Domestic Disturbance	5	2.6
Indecent behavior/public indecency	5	2.6
Unknown	4	2.1
Harassment, not specified	3	1.6
Per Judges Orders	3	1.6
Vandalism	3	1.6
Traffic violation	3	1.6
Loitering	2	1.0
Fight with Mother, not specified	1	.5
Found in Chicago/incoherent	1	.5
Possible Theft	1	.5
Possession of Paraphernalia	1	.5
Restraining Order Violation	1	.5
Walking down street with open alcohol	1	.5
False reporting	1	.5
Soliciting a minor	1	.5





Police Contacts of Former CSH Clients July 1, 1994 through June 30, 2004 (cont.)

Violent Contacts	N	%
Assault	23	69.7
Sexual assault	4	12.1
Battery	3	9.1
Arson	2	6.1
Weapons charge	1	3.0



Law Enforcement Contact Type

From July 1, 1994 through June 30, 2004

POLICE DESCRIPTIVES FROM JULY 1, 1994 TO

Year	% Non-violent	% Violent
SFY 1994	70.6%	29.4%
SFY 1995	88.2%	11.8%
SFY 1996	90.5%	9.5%
SFY 1997	57.1%	42.9%
SFY 1998	100.0%	0.0%
SFY 1999	78.9%	21.1%
SFY 2000	75.0%	25.0%
SFY 2001	83.3%	16.7%
SFY 2002	63.6%	36.4%



Reasons for the “Successful” Deinstitutionalization

- Funding for services followed the client into the community.
- There was effective, coordinated communication and discharge planning between the former CSH personnel and the staff at the receiving facilities.
- The Tracking Project served as “quality management tool” that imposed accountability on the receiving facilities over the ten year follow-up period.

